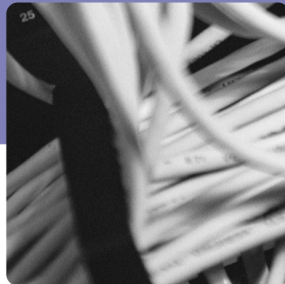


eloquence Product Information



eloquence is a well integrated development and runtime environment which significantly improves productivity. Developers can easily design and implement complex business applications or customize existing programs on the fly. Since eloquence was released in 1990, thousands of installations have confirmed this.

Software partners in many parts of the world appreciate eloquence as a powerful, reliable and flexible means for cost-effective development, execution, customization and maintenance of commercial applications. A host of features, not found in such a combination in other development and run-time environments,

makes eloquence unique and well suited to virtually all data processing tasks.

The TurboIMAGE compatibility extension opens up an easy, cost-effective migration path for HP e3000 business applications. The eloquence database offers compatibility beyond intrinsics and allows migration of HP e3000 applications with typically no effort. Database migration is just a matter of data export and data import.





eloquence – The Product

eloquence provides a powerful programming environment with an integrated database, optimised for high performance requirements of commercial applications.

eloquence supports a wide range of environments, ranging from simple ASCII terminals to graphical client/server environments. Business applications based on eloquence support a range from single user to hundreds of concurrent users and work with databases above 20 Gigabytes.

The eloquence product includes

The Interactive Development Environment (IDE) on Windows, a fully featured graphical development environment

- Program editor with integrated syntax checking and syntax colouring with multiple windows and views
- Integrated compiler
- Integrated source code debugger with support for debugging on remote servers.
- Integrated on-line help
- Integrated Dialog Editor

The Standard Development Environment (text based) on HP-UX, Linux and Windows

- Full screen program editor with built-in syntax checking
- Integrated compiler
- Integrated debugger

The eloquence programming language

- Comfortable syntax – easy to understand and easy to work with. Based on HP Business Basic.
- Object oriented elements
- Full integration of Database Management System
- Remote graphical user interfaces handle dialogs in a network environment
- REPORT WRITER building blocks. Create, edit and run reports.
- FORMS GENERATOR – create, modify and print forms for character based user interfaces.
- Operating system interface – execute OS commands within eloquence programs
- 'C' language interface

Graphical User Interface options

- Web based dialog interface
- Java based dialog interface
- Windows based dialog interface

DBMS – Database Management System

- Based on IMAGE
- Read/write access to the eloquence database from eloquence and other programming languages
- Client/Server technology
- Transparent local and remote database access
- Integrated online backup
- Minimized database maintenance requirements
- UTILITIES – a comprehensive suite of database utilities, including database restructuring and web based status monitoring
- QUERY – easy-to-use interface to access database contents without programming.

TurboIMAGE compatibility extension

- Access from migrated HP e3000 TurboIMAGE applications to the eloquence DBMS
- MPE data base migration tools

ODBC driver

- Available as a separate product

Components and Supported Platforms

eloquence Version B.07.00 has a client/server architecture with the following core components:

eloquence Database Server

HP-UX, Linux, Windows NT/2000/XP

eloquence Workstation

HP-UX, Linux, Windows

eloquence IDE

Interactive development environment on Windows



The eloquence B.07.00 Database Server and Workstation are also fully supported on Itanium servers.

For more information about eloquence please visit the eloquence homepage at <http://www.hp-eloquence.com>

Contact

Marxmeier Software AG

Besenbruchstraße 9

42285 Wuppertal

Germany

Phone +49.202.2431440

Fax +49.202.2431420

info@marxmeier.com

<http://www.marxmeier.com>

